

# 110 Gibraltar Road | Suite 222

Horsham, PA 19044



## 2,542 SF New Spec Suite Available for Lease



Rendering

# 110 Gibraltar Road | Suite 222

Horsham, Pennsylvania, 19044

## PROPERTY HIGHLIGHTS

### AMENITIES

110 Gibraltar Road is a two-story, multi-tenant office building within the sought-after Pennsylvania Lifestyle Campus featuring new, energy-efficient windows, a modern lobby, and on-site EV charging stations. Tenants enjoy the proximity to countless lifestyle centers, the walkability to restaurants, an on-campus daycare facility, and a seasonal beer garden.

Additionally, tenants have access to the on-campus fitness center complete with showers and changing space, a conference and training facility, outdoor volleyball court, and the 5-mile Horsham Powerline trail with outdoor exercise circuits.

### TRANSPORTATION

Commuting to and from the office for employees and visitors across the tri-state area couldn't be easier, as the PA Turnpike, Route 611, and 63 are all within a 5-minute drive from 110 Gibraltar.

Horsham Township's h.o.p.s shuttle service is also available to tenants, facilitating transportation between the SEPTA Regional Rail, the Horsham Business Center & the PA Lifestyle Campus.

**Building Owner:** Workspace Property Trust

**Total Building Size:** 59,429

**Ceiling Height:** 8'4"

2,542 SF Spec Suite Available Now

Office Space



Lounge Seating



Private Conference Room

2,542 SF Spec Suite Available Now

Office Space



Locker Access



Open Floor Desk Area



Private Offices

2,542 \*SF New Spec Suite Office Available For Lease

*\*Can accommodate larger requirements*

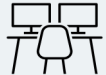
110 Gibraltar Road | Suite 222

# 110 Gibraltar Road | Suite 222

Horsham, PA 19044

## 2,542 SF New Spec Suite Office Available for Lease

Accommodates up to 18 desks  
2 Offices  
1 Meeting Room  
1 Lounge  
1 Coffee bar  
18 Lockers  
Pantry



**Furnished**



**IT/AV Packages Available**



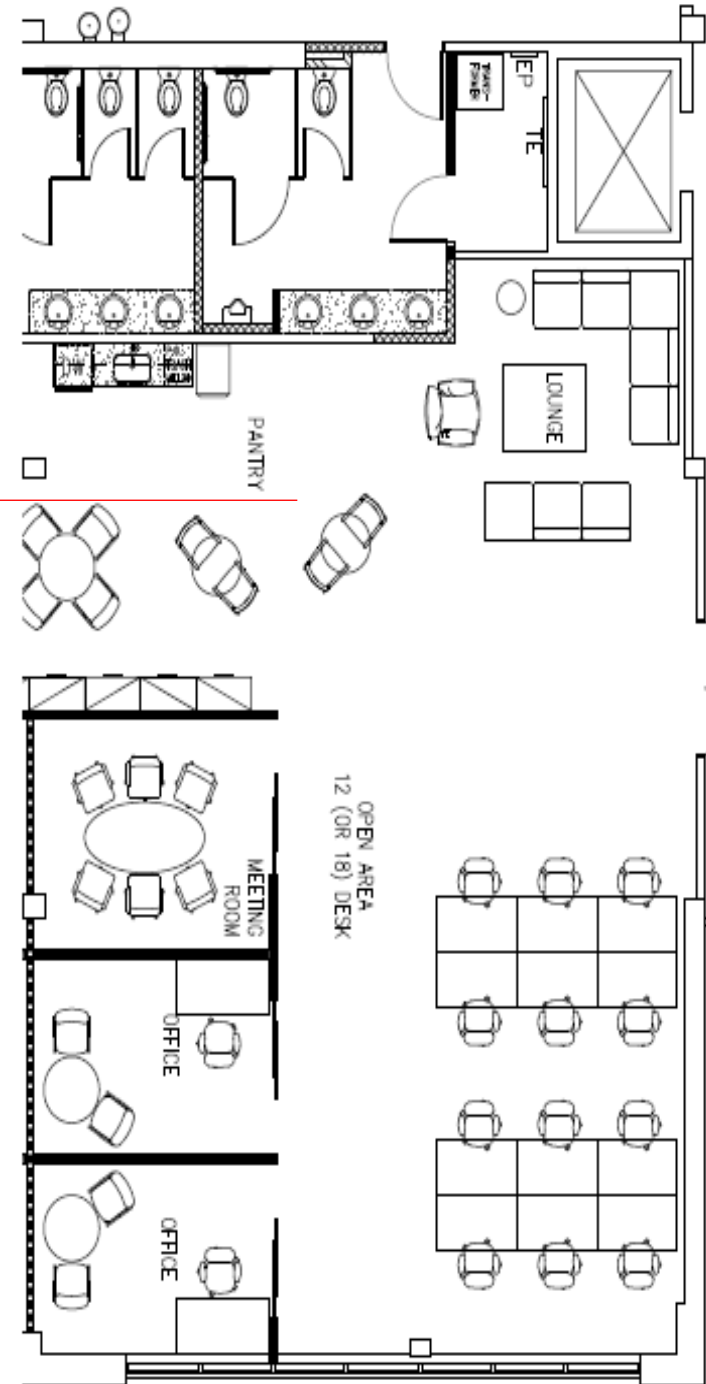
**Expandable**



## Leasing Information

700 Dresher Road, Suite 150  
(215) 328-2732  
[www.workspaceproperty.com](http://www.workspaceproperty.com)

Doug. Himmelreich  
Director of Leasing  
[dhimmelreich@workspaceproperty.com](mailto:dhimmelreich@workspaceproperty.com)





# Spaces for the Way Work Happens Today.

These beautifully designed themes inspire creativity and encourage productivity. Whether you are looking for 1,000 square feet or 100,000 square feet, our in-house design & development team can deliver a turnkey office solution.

## Tailored for the Evolution of Office:

- “A La Carte” or “On Demand” Furniture Packages Available
- Plug & Play IT Packages Available



Scan here to learn more about our premium theme selects.



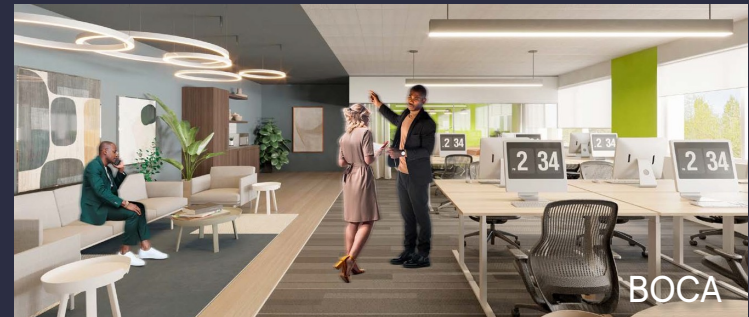
SCANDI



AZURE



TAHOE



BOCA

\*Indicative of the look and feel (not the actual suite)