

0

Windy Ridge Parkway, 12th Floor

Atlanta, GA 30339

2,351 - 25,926 SF Available for Lease

Office Space

0

5

2



Looking for Something Else?

Explore other Workspace properties in Atlanta at [WorkspaceAtlanta.com](https://www.WorkspaceAtlanta.com).



2500 Windy Ridge Pkwy 12th Floor

Atlanta, GA 30339

PROPERTY HIGHLIGHTS

- On-site cafeteria and grab & go café
- Extensive recreational space with soft seating
- On-site fitness center
- Expansive outdoor patio
- Grand lobby with ample collaborative spaces
- Abundant parking
- Minutes to I-285 and direct exposure to Perry Ferry Road
- 10-minute commute to Buckhead, 15 to Midtown and 20 to downtown ATL
- Wildwood Office Park is home to many Fortune 100 companies

FIND YOUR SPACE WITH WORKSPACE

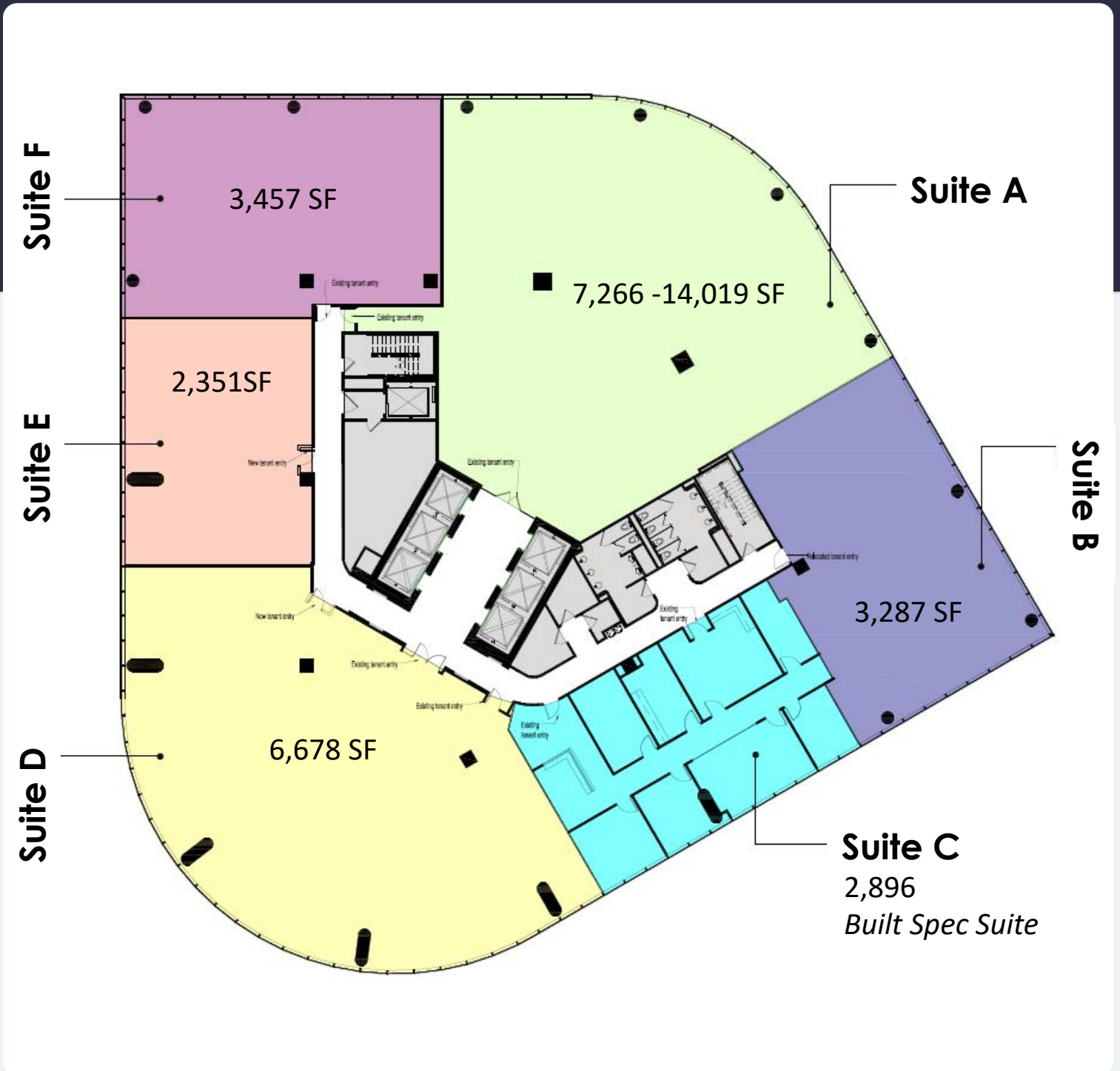
Workspace Property Trust is a leading, privately held, full-service commercial real estate company that provides multifaceted office solutions for today's modern companies. We own, lease, and manage an extensive portfolio of over 18 million square feet across more than 200 properties in thriving submarkets nationwide.



2,351 - 25,926 SF Available for Lease

2,351 - 25,926 SF Available for Lease

Twelfth Floor | Office Space



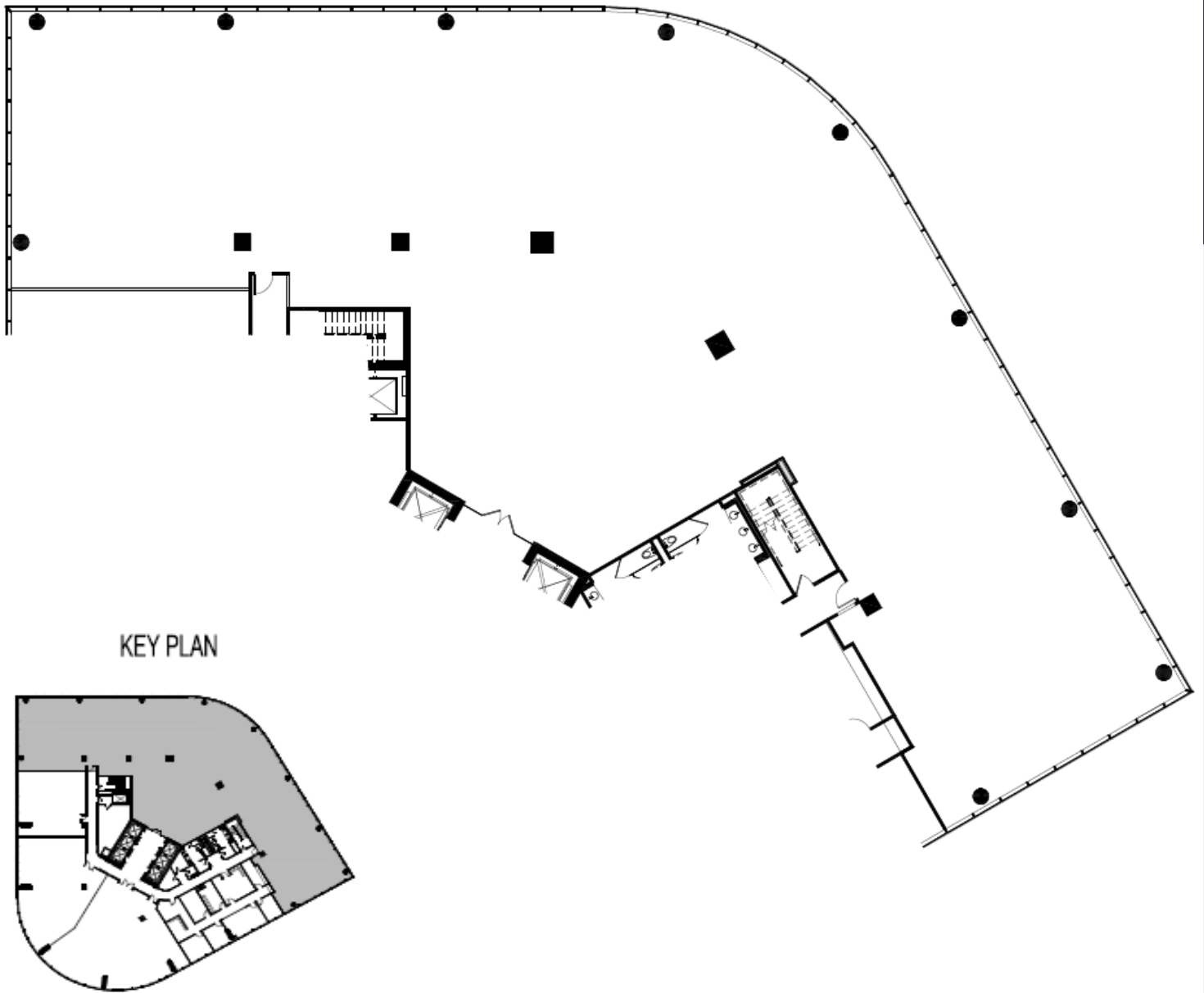
2500 Windy Ridge Pkwy

Atlanta, GA 30339

workspace
property trust

Suite A | 7,266 -14,019 SF

Twelfth Floor | Office Space



Leasing Information

Wes Rudes

Director of Leasing

470.270.1275 | wrudes@workspaceproperty.com

Looking for Something Else?

Explore other Workspace properties
in Atlanta at [WorkspaceAtlanta.com](https://workspaceatlanta.com).

2500 Windy Ridge Pkwy

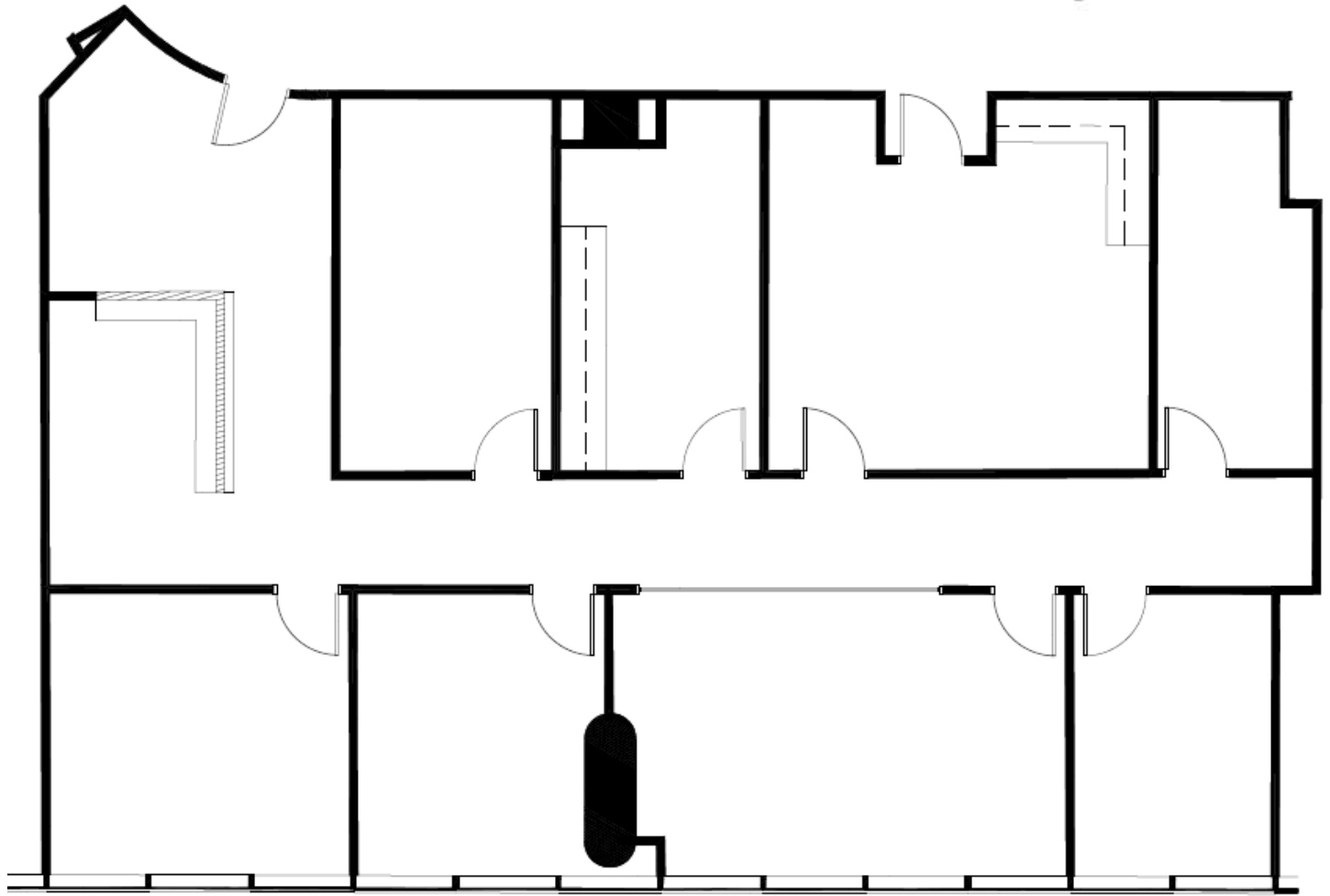
Atlanta, GA 30339

workspace
property trust

Suite C | 2,896 SF

Twelfth Floor | Office Space

KEY PLAN



Leasing Information

Wes Rudes

Director of Leasing

470.270.1275 | wrudes@workspaceproperty.com

Looking for Something Else?

Explore other Workspace properties
in Atlanta at [WorkspaceAtlanta.com](https://www.workspaceatlanta.com).