

2 Walnut Grove Drive | Suite 210

Horsham, PA 19044

workspace
property trust

8,283 SF Available Now

Office Space



2 Walnut Grove Drive | Suite 210

Horsham, Pennsylvania, 19044

PROPERTY HIGHLIGHTS

AMENITIES

Three-story class “A” office building conveniently located in Horsham, PA - just minutes from 3 brand new apartment developments, ample retail stores and dining options. The sunlit atrium lobby was updated in 2020 and received new collaborative furniture.

TRANSPORTATION

Proximate location to (2) Pennsylvania Turnpike access points.

Horsham Township’s h.o.p.s shuttle service is also available to tenants, facilitating transportation between the SEPTA Regional Rail, the Horsham Business Center & the PA Lifestyle Campus.

SUSTAINABILITY

Energy Star labeled building. Green initiatives in place by tenants and property management to include janitorial and recycling.

Building Owner: Workspace Property Trust

Total Building Size: 81,856

Ceiling Height: 8’4”



Sunlit Atrium Lobby



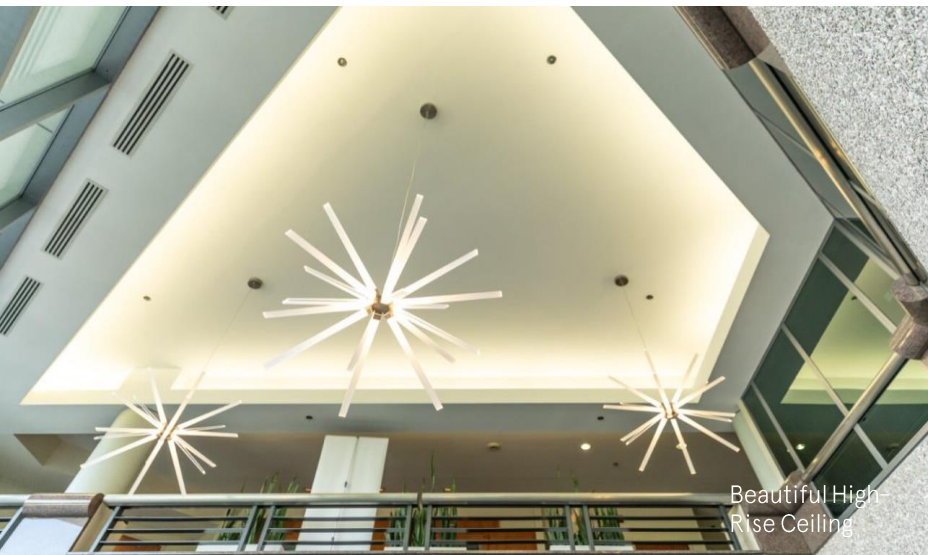
Class “A” 3-Story Offices

8,283 SF Available Now

Office Space



Updated Lobby



Beautiful High-Rise Ceiling



Updated Lobby

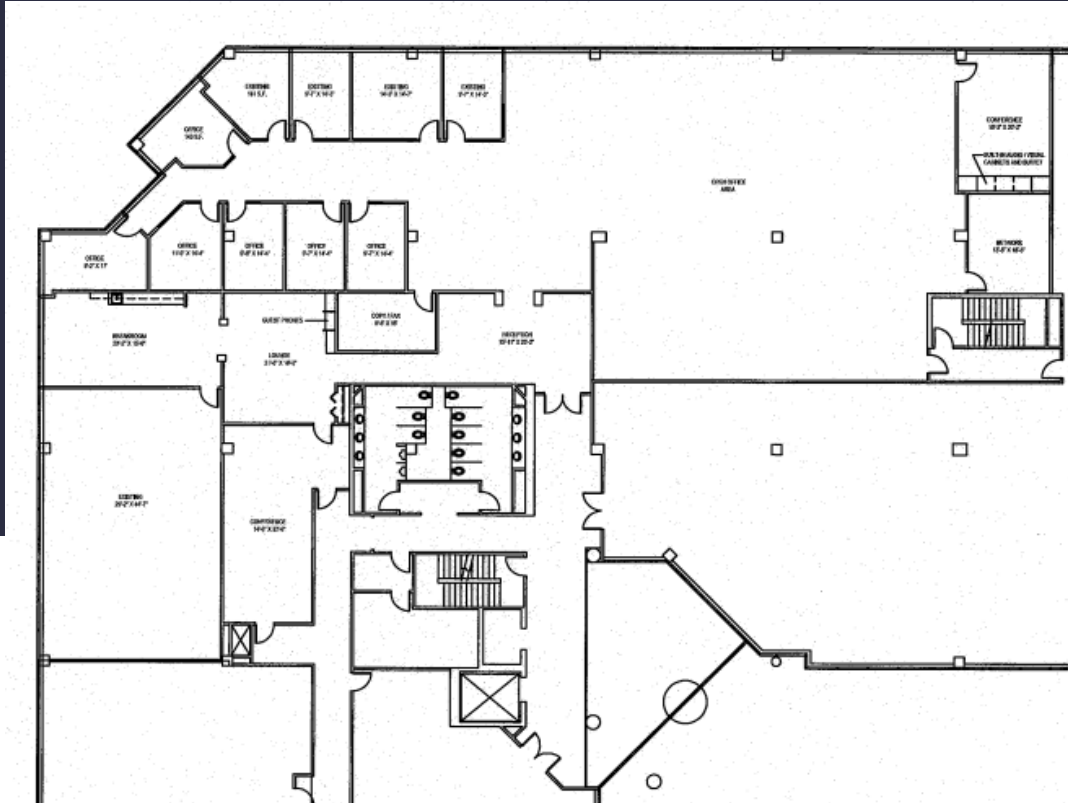
8,283 SF Available Now

2 Walnut Grove Drive | Suite 210

2 Walnut Grove Drive I Suite 210

Horsham, Pennsylvania 19044

8,283 SF Available Now



Leasing Information

700 Dresher Road, Suite 150
(215) 328-2732
www.workspaceproperty.com

Doug, Himmelreich
Director of Leasing
dhimmelreich@workspaceproperty.com



Spaces for the Way Work Happens Today.

These beautifully designed themes inspire creativity and encourage productivity. Whether you are looking for 1,000 square feet or 100,000 square feet, our in-house design & development team can deliver a turnkey office solution.

Tailored for the Evolution of Office:

- "A La Carte" or "On Demand" Furniture Packages Available
- Plug & Play IT Packages Available



Scan here to learn more about our premium theme selects.



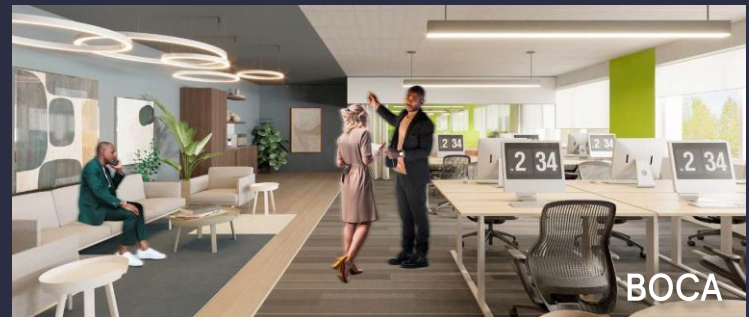
SCANDI



AZURE



TAHOE



BOCA

*Indicative of the look and feel (not the actual suite)