

3
8
2

Great Valley Parkway

Malvern, PA 19355

3,600 SF Available for Lease

Industrial / R&D / Flex (IRDF) Space

**Freshly
Demoed!**



283 Great Valley Parkway

Malvern, PA 19355

Located within minutes to several restaurants, hotels & conferencing centers, daycare facilities, tennis courts, a sand volleyball court and the Chester Valley Trail. This property sits within the Keystone Innovation Zone and includes easy access to the PA Turnpike, Routes 202, 30, & 401, and public transportation. Freshly demoed, includes full AC, loading dock and ADA accessible bathroom.

Property Highlights

Building Owner: Workspace Property Trust

Total Building Size: 28,800 Square Feet

Available Space: 3,600 Square Feet

Clear Height: 16' peaked roof

Space Condition: Existing semi-conductor lab

Loading: Drive-in Door

Power: 2,000 Amps

Features: Direct entrance, and individualized HVAC
& electric



Loading Dock Interior



Freshly Demoed



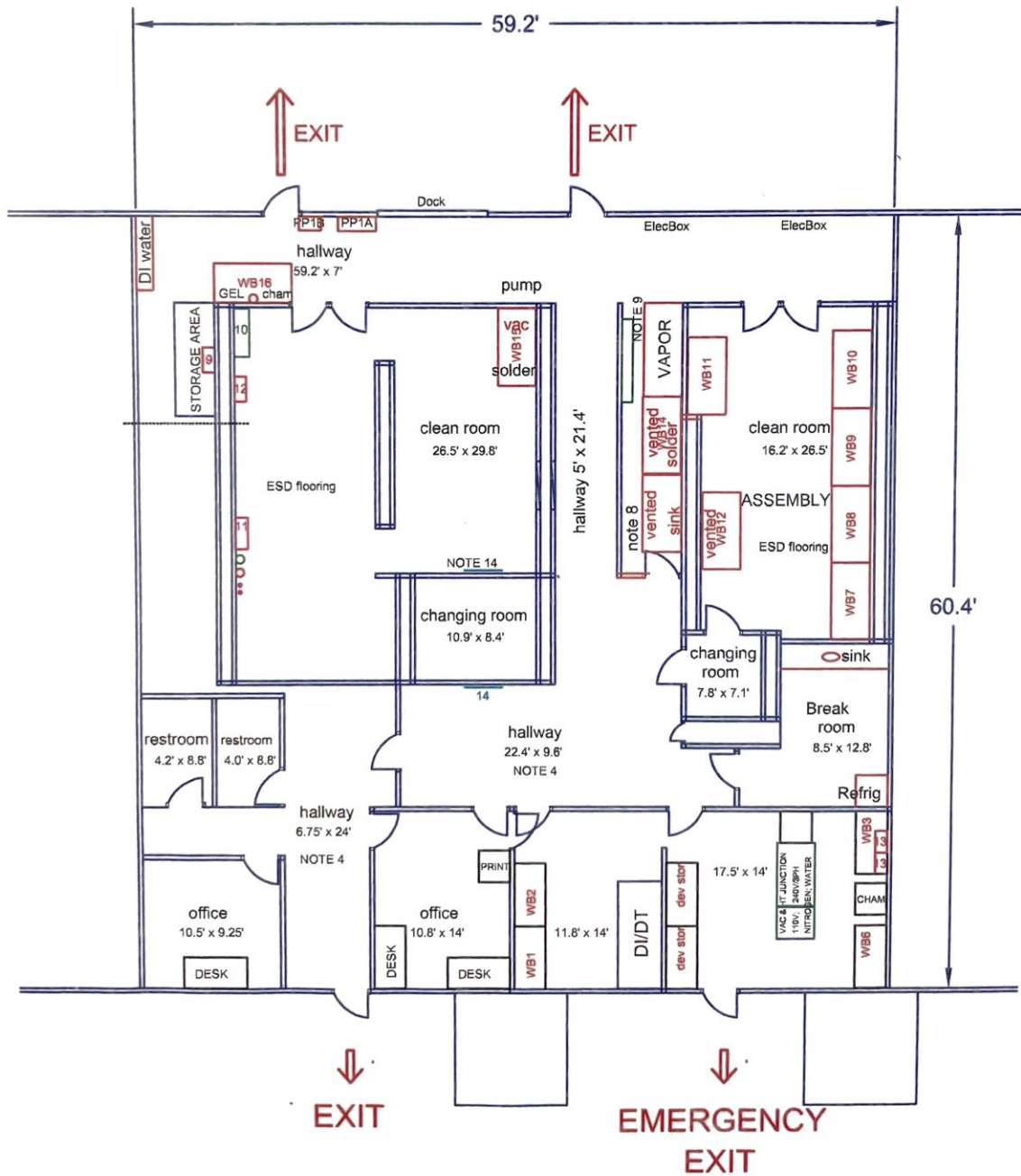
Loading Dock Exterior

3,600 SF Available for Lease

Industrial / R&D / Flex (IRDF) Space

3,600 SF Available for Lease

Industrial / R&D / Flex (IRDF) Space





Spaces for the Way Work Happens Today.

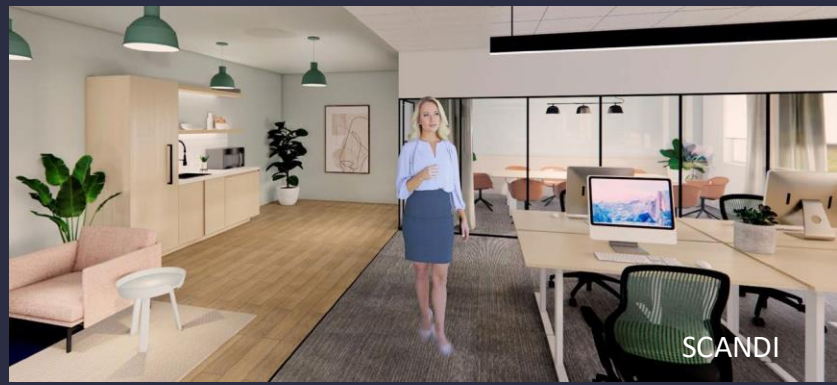
These beautifully designed themes inspire creativity and encourage productivity. Whether you are looking for 1,000 square feet or 100,000 square feet, our in-house design & development team can deliver a turnkey office solution.

Tailored for the Evolution of Office:

- “A La Carte” or “On Demand” Furniture Packages Available
- Plug & Play IT Packages Available



Scan here to learn more about our premium theme selects.



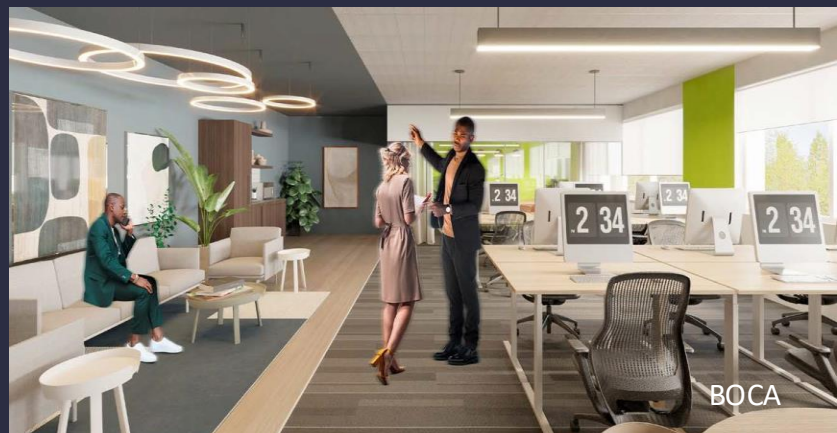
SCANDI



AZURE



TAHOE



BOCA

*Indicative of the look and feel (not the actual suite)