

# Monarch Lakes

3100 SW 145<sup>th</sup> Ave Suite 410

Miramar, FL 33027

2,189 SF Available 10.1.24

**workspace**  
property trust

Asking Rent: \$24.00/NNN

2024 OPEX: \$14.50 RSF



# 3100 SW 145<sup>TH</sup> Ave Suite 410

Miramar, Florida 33027

## PROPERTY HIGHLIGHTS

### AMENITIES

Class "A" office building in prestigious Huntington Business Park with immediate access to I-75. Hurricane impact glass windows and first floor common area locker rooms with showers. New furniture in lobby. On-site management, security and cafe. Outdoor tenant lounge area with water views, free Wi-Fi in lobby, interactive touchscreen directory with real-time traffic updates and 5.5/1,000 SF parking ratio. Building signage visible from I-75. Close-proximity to shopping, hotels, restaurants, banking, daycare and fitness centers. Adjacent multi-family project for live, work, play. Newly delivered 250-unit adjacent multi-family

### TRANSPORTATION

Immediate access to I-75 and Miramar Parkway

### TECHNOLOGY

AT&T, FPL FiberNet, Sprint and Comcast

### SUSTAINABILITY

LEED Gold

**Building Owner:** Workspace Property Trust

**Total Building Size:** 104,337 RSF

**2,189 SF Available 10.1.24**



Lakeview



Lobby Area



Aerial Shot



Lobby Area



Aerial Shot



Lobby Area



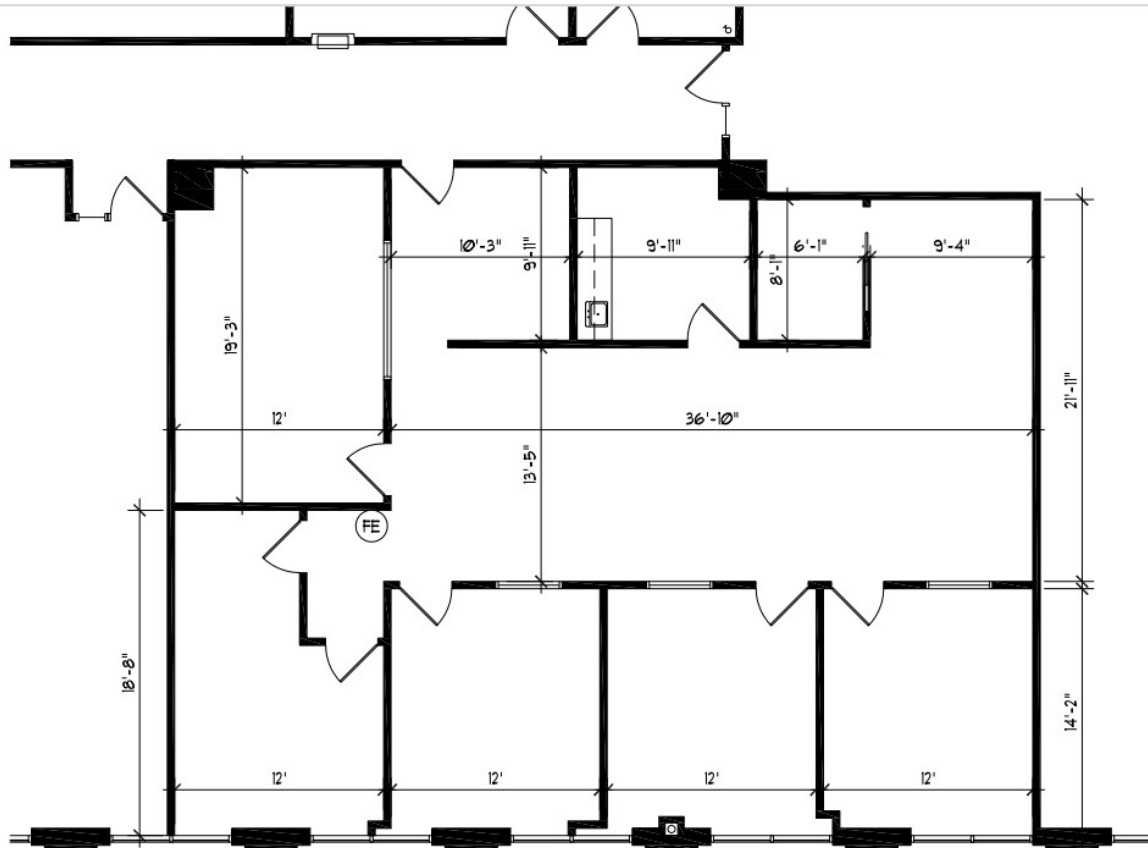
Outdoor Lounge

# 3100 SW 145<sup>th</sup> Ave Suite 410

Miramar, Florida 33027



## 2,189 SF Available 10.1.24



## Leasing Information

777 Yamato Road, Suite 105, Boca Raton, FL, 33431  
(954) 391-5503  
[www.workspaceproperty.com](http://www.workspaceproperty.com)

Mike, Nathanson  
Director of Leasing  
[mnathanson@workspaceproperty.com](mailto:mnathanson@workspaceproperty.com)

# Spaces for the Way Work Happens Today.

These beautifully designed themes inspire creativity and encourage productivity. Whether you are looking for 1,000 square feet or 100,000 square feet, our in-house design & development team can deliver a turnkey office solution.

## Tailored for the Evolution of Office:

- “A La Carte” or “On Demand” Furniture Packages Available
- Plug & Play IT Packages Available



**Scan here** to learn more about our premium theme selects.

