

66

Perimeter Center East

Atlanta, GA 30346

workspace
property trust

584,785 Available for Lease | Divisions of 1,009–25,000

Office Space

64 &



Looking for Something Else?

Explore other Workspace properties in Atlanta at [WorkspaceAtlanta.com](https://www.workspaceatlanta.com).

64/66 Perimeter Center East

Atlanta, GA 30346

PROPERTY HIGHLIGHTS

- Turnkey Data center available with up to 18 megawatts of power existing, multiple fiber providers and abundant backup power
- State-of-the-art conference facilities
- On-site fitness center
- Full-service cafeteria
- Outdoor tenant lounge + deck
- MARTA 1.7 miles from office
- Access from I-285 and GA 400
- Minutes from retail and restaurants
- Two 2-Megawatt generators available for tenant use
- 24-hour building access + security
- Ample parking with covered parking deck
- Highly efficient 23,000 & 25,000 SF floor plates

FIND YOUR SPACE WITH WORKSPACE

Workspace Property Trust is a leading, privately held, full-service commercial real estate company that provides multifaceted office solutions for today's modern companies. We own, lease, and manage an extensive portfolio of over 18 million square feet across more than 200 properties in thriving submarkets nationwide.



SIGNAGE
OPPORTUNITY

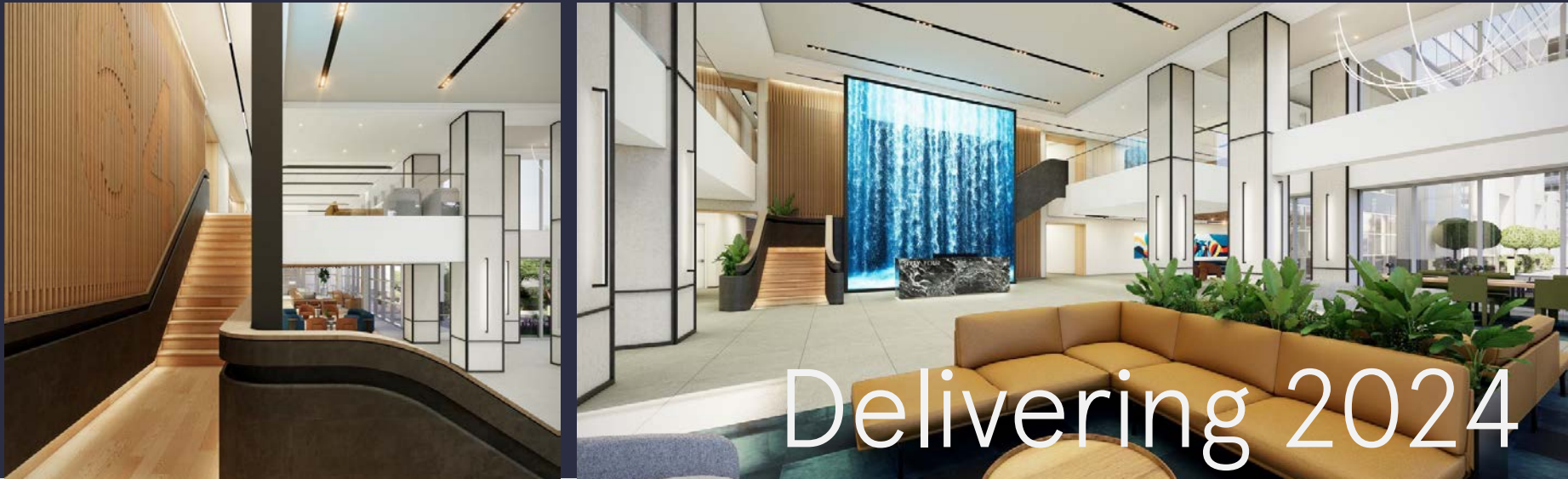
Top of 64 PCE

64 PCE Building Size: 384,575 Square Feet

66 PCE Building Size: 200,210 Square Feet

64/66 Perimeter Center East | STATE-OF-THE-ART AMENITIES

Atlanta, GA 30346



Delivering 2024



Leasing Information

Wes Rudes

Director of Leasing

470.270.1275 | wru@workspaceproperty.com

Looking for Something Else?

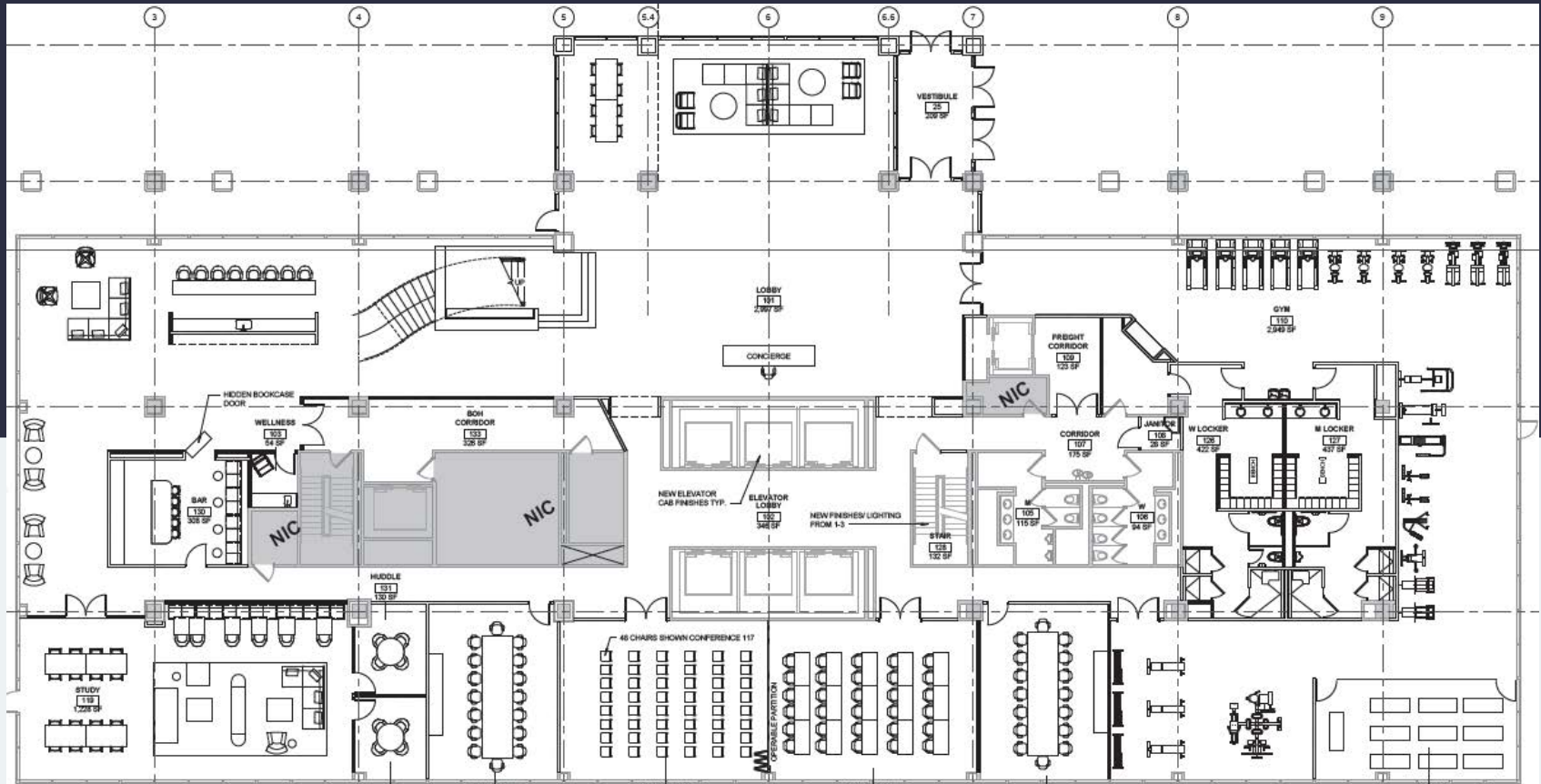
Explore other Workspace properties
in Atlanta at [WorkspaceAtlanta.com](https://workspaceatlanta.com).

64/66 Perimeter Center East | 64 PCE Floor 1

Atlanta, GA 30346



64 PCE - Floor 1 | SHARED AMENITIES FOR BOTH BUILDINGS



Leasing Information

Wes Rudes
Director of Leasing
470.270.1275 | w.rudes@workspaceproperty.com

Looking for Something Else?

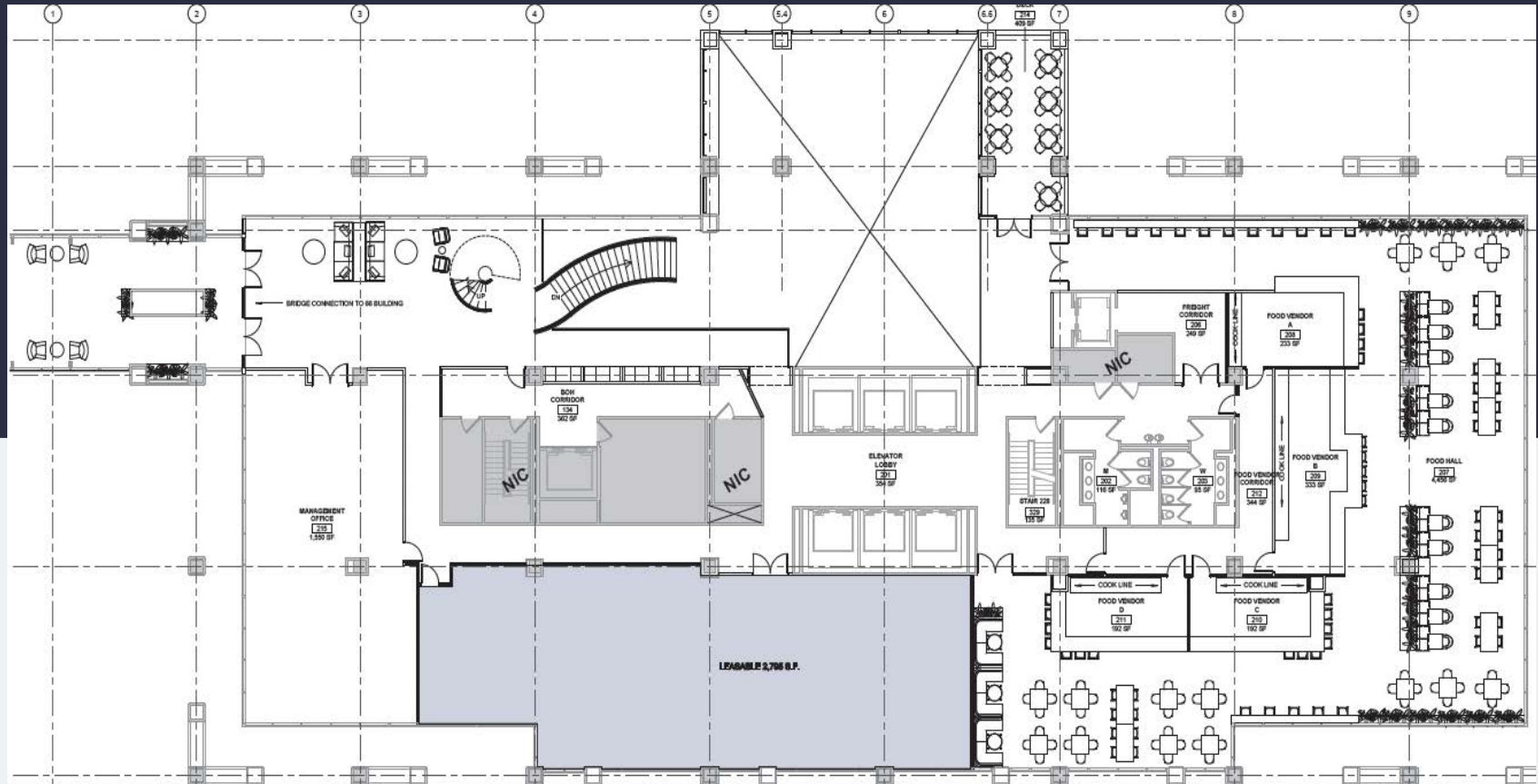
Explore other Workspace properties
in Atlanta at [WorkspaceAtlanta.com](https://www.workspaceatlanta.com).

64/66 Perimeter Center East | 64 PCE Floor 2

Atlanta, GA 30346

workspace
property trust

64 PCE - Floor 2 | SHARED AMENITIES FOR BOTH BUILDINGS



Leasing Information

Wes Rudes
Director of Leasing
470.270.1275 | w.rudes@workspaceproperty.com

Looking for Something Else?

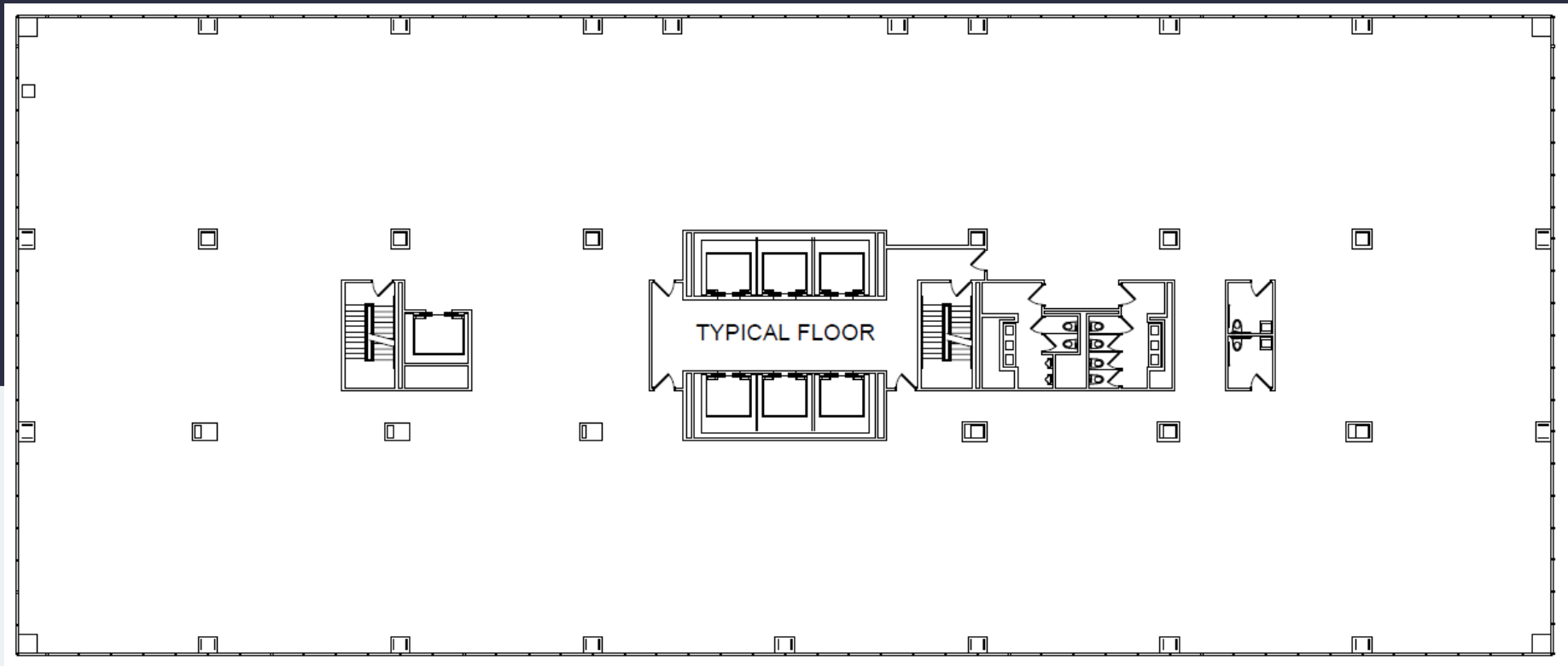
Explore other Workspace properties
in Atlanta at [WorkspaceAtlanta.com](https://www.workspaceatlanta.com).

64 Perimeter Center East | Typical Floor Plan

Atlanta, GA 30346



64 PCE – Typical Floor Plan | 25,000 SF Available for Lease



Leasing Information

Wes Rudes

Director of Leasing

470.270.1275 | wrudes@workspaceproperty.com

Looking for Something Else?

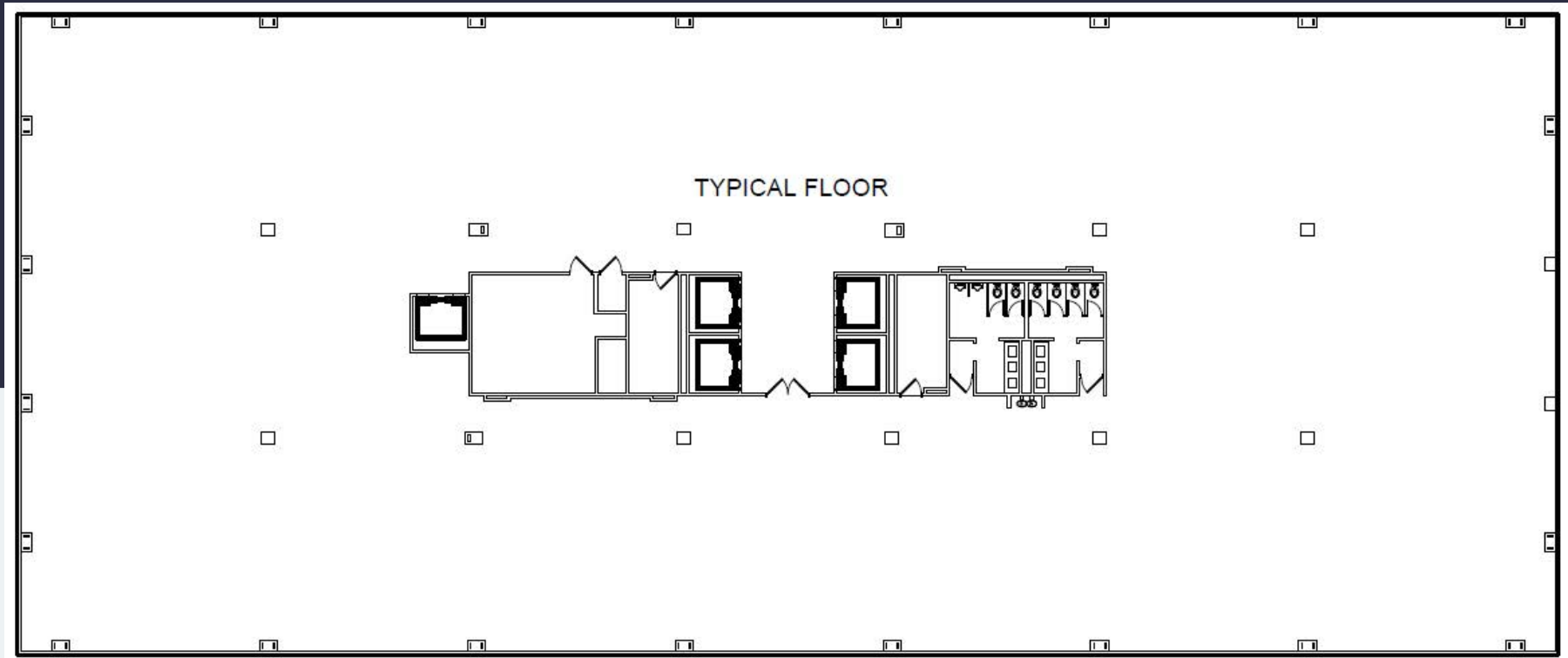
Explore other Workspace properties
in Atlanta at [WorkspaceAtlanta.com](https://www.workspaceatlanta.com).

66 Perimeter Center East | Typical Floor Plan

Atlanta, GA 30346



66 PCE – Typical Floor Plan | 22,000 SF Available for Lease



Leasing Information

Wes Rudes

Director of Leasing

470.270.1275 | wru@workspaceproperty.com

Looking for Something Else?

Explore other Workspace properties
in Atlanta at [WorkspaceAtlanta.com](https://www.workspaceatlanta.com).