

Prairie View Office Bldg

7800 Equitable, Suite 100

Eden Prairie, MN 55344



7,436 SF Available Now

Office Space

2024 OPEX: \$13.29/RSF



7800 Equitable Dr | Suite 100

Eden Prairie, MN 55344

7800 Equitable Drive is ideal for companies in need of warehouse function within a traditional office setting with high ceilings, large windows, two-sides of glass and fireplace. Nestled in the sought-after southwest suburb of Eden Prairie, the building offers a welcoming lower level sitting area, an outdoor patio, and ample parking with both surface and garage spaces.

Property Highlights

- Shared dock door + flexible storage
- Private suite entrance
- Surface and tempered executive parking
- Monument Signage available
- Four childcare facilities under a 1.5 drive
- Two miles to Eden Prairie Center's numerous restaurants and retail options
- Nature views



7,436 SF Available Now



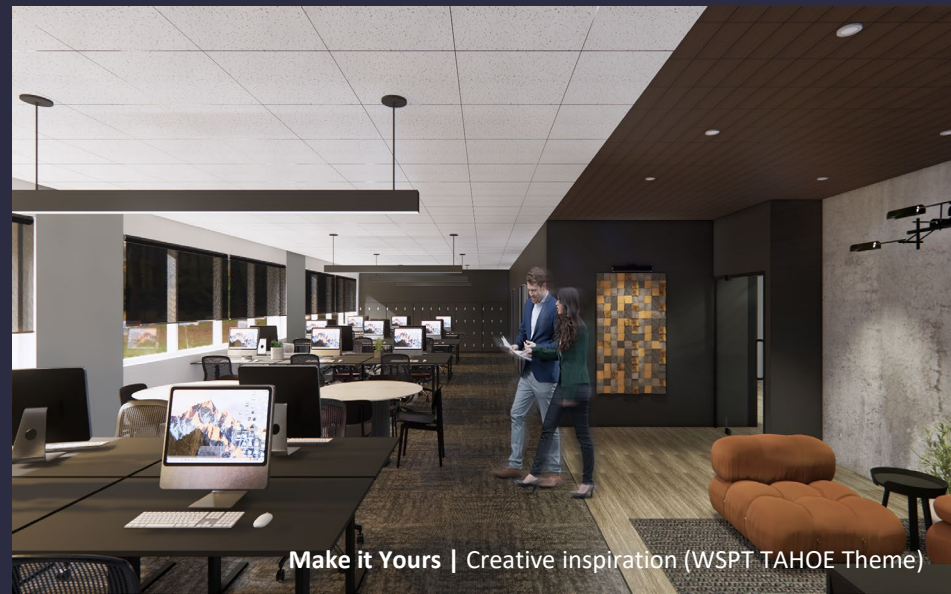
Break Area



First floor Office



Open Office

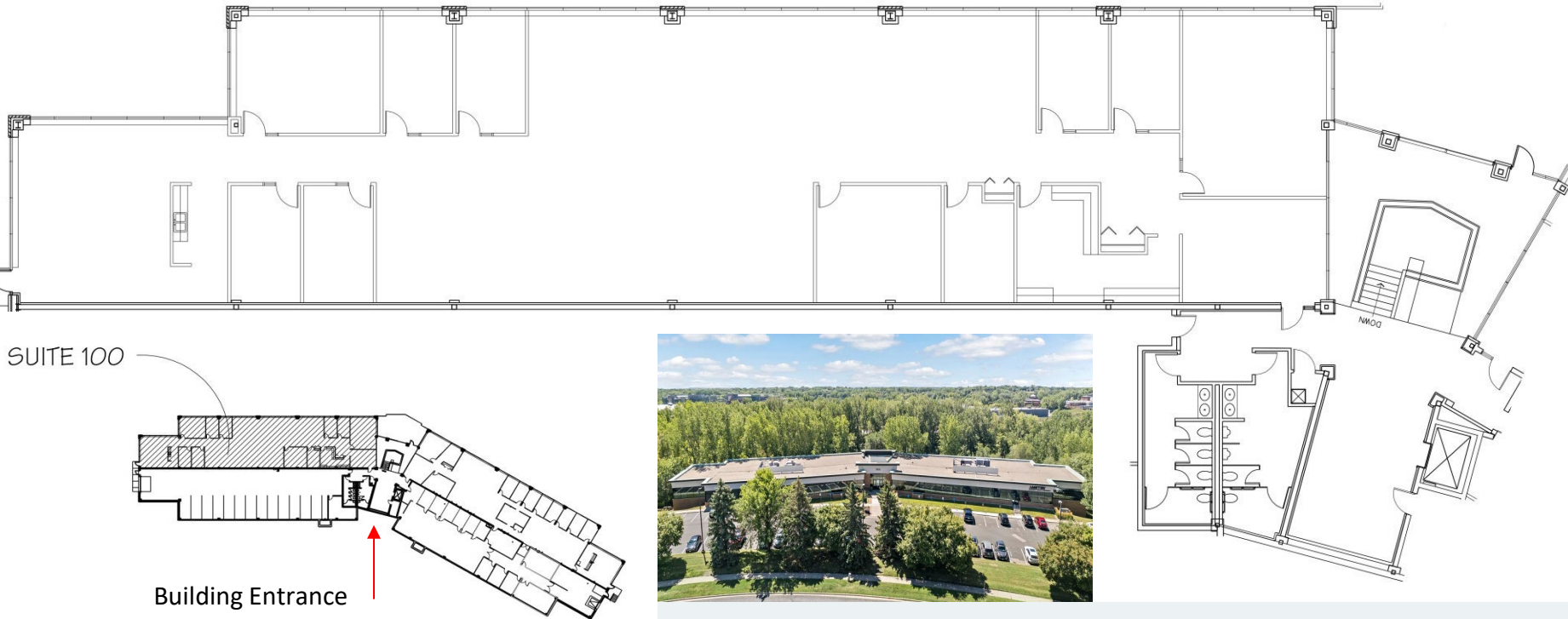


Make it Yours | Creative inspiration (WSPT TAHOE Theme)

7800 Equitable Dr | Suite 100

Eden Prairie, MN 55344

7,436 SF Available **workspace**
property trust



Leasing Information

6625 W. 78t Street, Bloomington, MN 55439
(952) 292-4952
www.workspaceproperty.com

Brad Butler
VP, Regional Director
bbutler@workspaceproperty.com



Spaces for the Way Work Happens Today.

These beautifully designed themes inspire creativity and encourage productivity. Whether you are looking for 1,000 square feet or 100,000 square feet, our in-house design & development team can deliver a turnkey office solution.

Tailored for the Evolution of Office:

- “A La Carte” or “On Demand” Furniture Packages Available
- Plug & Play IT Packages Available



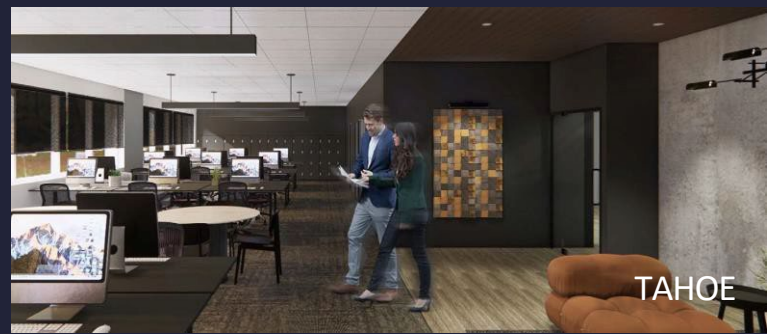
Scan here to learn more about some of our favorite design options.



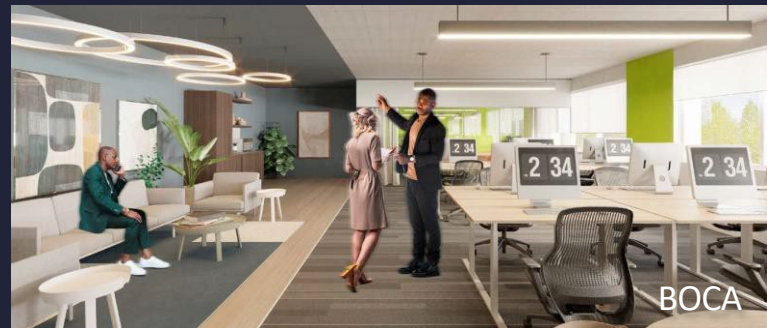
SCANDI



AZURE



TAHOE



BOCA

*Indicative of the look and feel (not the actual suite)