

# Huntington Square III

3350 SW 148<sup>th</sup> Ave Suite 330

Miramar, FL 33027

2,493 SF Available Now

workspace  
property trust

Asking Rent: \$24.00/NNN

2024 OPEX: \$14.25 RSF



# 3350 SW 148<sup>TH</sup> Ave Suite 330

Miramar, Florida 33027

## PROPERTY HIGHLIGHTS

### AMENITIES

Class "A" office campus in prestigious "Huntington Business Park" located with immediate access to I-75. On-site management, café and security, outdoor tenant lounge with covered seating areas, updated conference facility, free Wi-Fi in lobby, and 4.5/1,000 SF parking ratio. Proximity to shopping centers, hotels, restaurants, banks, daycare and fitness centers.

### TRANSPORTATION

Interstate 75 frontage with easy access to all major highways

### TECHNOLOGY

Clear Wireless, Comcast

### SUSTAINABILITY

Energy Star labeled building. Green initiatives in place by tenants and property management to include janitorial and recycling.

**Building Owner:** Workspace Property Trust

**Total Building Size:** 154,765 SF



Conference Room



Aerial Shot

2,493 SF Available Now



Lobby/Atrium



Sideview of Entrance



Front Entrance



Lobby/Atrium

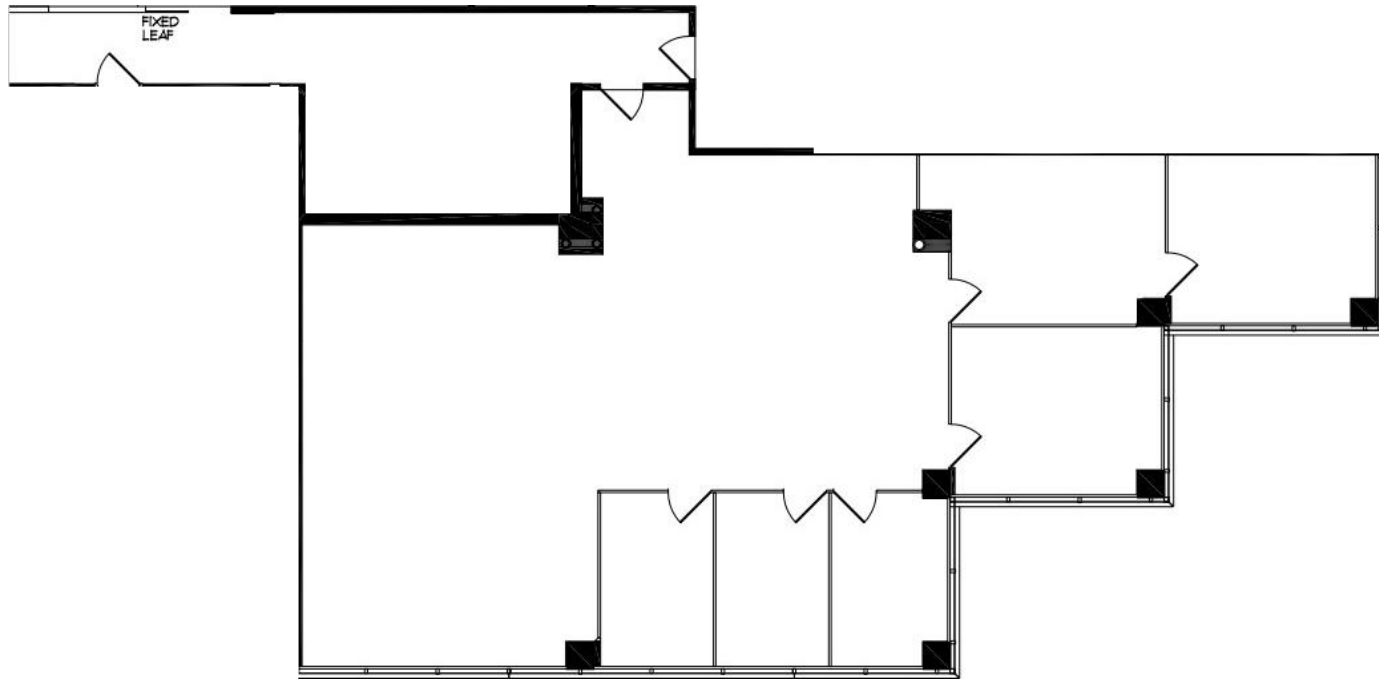


Rear Entrance of Building

# 3350 SW 148<sup>th</sup> Suite 330

Miramar, Florida 33027

## 2,493 SF Available Now



## Leasing Information

777 Yamato Road, Suite 105, Boca Raton, FL, 33431  
(954) 391-5503  
[www.workspaceproperty.com](http://www.workspaceproperty.com)

Mike, Nathanson  
Director of Leasing  
[mnathanson@workspaceproperty.com](mailto:mnathanson@workspaceproperty.com)

# Spaces for the Way Work Happens Today.

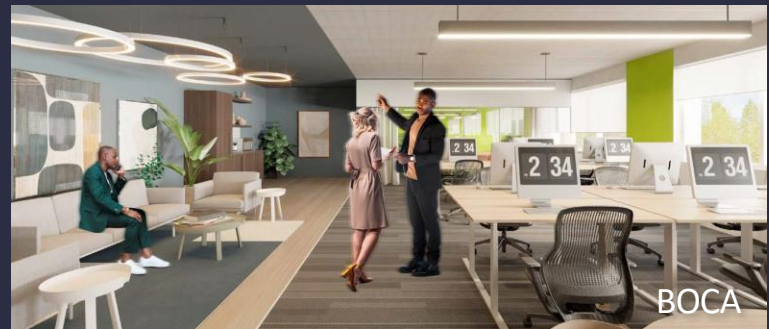
These beautifully designed themes inspire creativity and encourage productivity. Whether you are looking for 1,000 square feet or 100,000 square feet, our in-house design & development team can deliver a turnkey office solution.

## Tailored for the Evolution of Office:

- “A La Carte” or “On Demand” Furniture Packages Available
- Plug & Play IT Packages Available



Scan here to learn more about our premium theme selects.



\*Indicative of the look and feel (not the actual suite)